

201

8.2 HW p518 3-16, 23-28, 33-36

3.  $x = 9$

$y = 15$

4.  $n = 12$

$m = 5$

5.  $a = 55$

6.  $2p = 120$

$p = 60$

7.  $z - 8 = 20$

$z = 28$

$d - 21 = 105$

$d = 126$

8.  $g + 4 = 65$

$g = 61$

$16 - h = 7$

$h = 9$

9.  $180$   
 $-51$

10.  $180$   
 $-95$

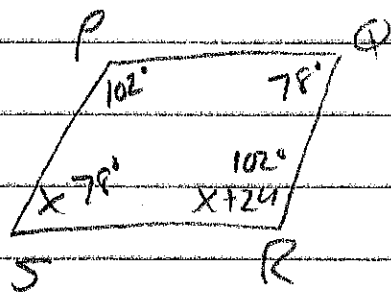
11.  $180$   
 $-119$

$m\angle B = 129^\circ$

$m\angle L = 85^\circ$

$m\angle Y = 61^\circ$

12.



$2x + 24 = 180$

$2x = 156$

$x = 78$

13.  $5a = 15$

$a = 3$

$b - 1 = 9$

$b = 10$

14.  $4m = 16$

$m = 4$

$2n = 9 - n$

$3n = 9$

$n = 3$

15.  $5y = 4y + 4$

$y = 4$

$3x = 12$

$x = 4$

16.  $O(0,0)$

$Q(2,5)$

Midpt  $\frac{0+2}{2}, \frac{0+5}{2}$

$A\left(1, \frac{5}{2}\right)$

23.  $m\angle EGF = 120$  Lin. Pair

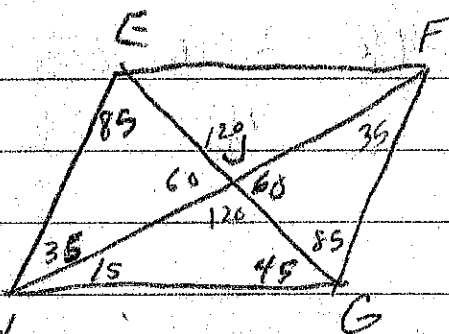
24.  $m\angle EGF = 85$  Alt Int  $\angle$ s

25.  $m\angle HFG = 35^\circ$   $\Delta$  sum 180

26.  $m\angle GEF = 45^\circ$  Alt Int  $\angle$ s H

27.  $m\angle HGF = 130^\circ$

28.  $m\angle EHG = 50^\circ$

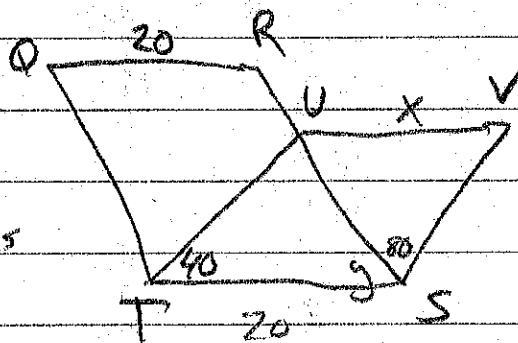


33.

$$\begin{array}{r} 180 \\ - 40 \\ \hline 140 \end{array}$$

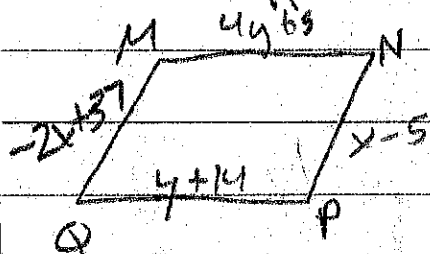
$$\begin{array}{r} 140 \\ - 80 \\ \hline 60^\circ = y \end{array}$$

Cons  $\angle$ s  
Suppl



$x = 20$  opp. sides  $\cong$

34.



$$-2x + 37 = x - 5$$

$$42 = 3x$$

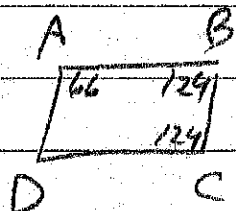
$$14 = x$$

$$4y + 5 = y + 14$$

$$3y = 9$$

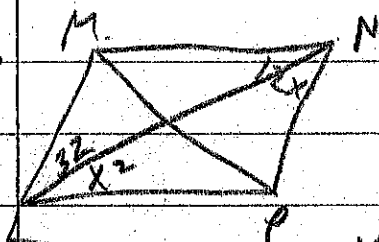
$$y = 3$$

35.



Opp  $\angle$ s are  $\neq$

36.



$$12x = x^2 + 32$$

$$0 = x^2 - 12x + 32$$

$$0 = (x - 4)(x - 8)$$

$$x = 4 \quad x = 8$$

Too Big

$m\angle NLP = 16$